

INTERLUBE

A **TIMKEN** Brand



LUBEPLUS GX Centralised Lubrication System Multi-Industry Applications



Interlube Systems Ltd - maximising industrial performance world-wide...

LUBEPLUS GX ELECTRICALLY OPERATED SINGLE LINE SYSTEM

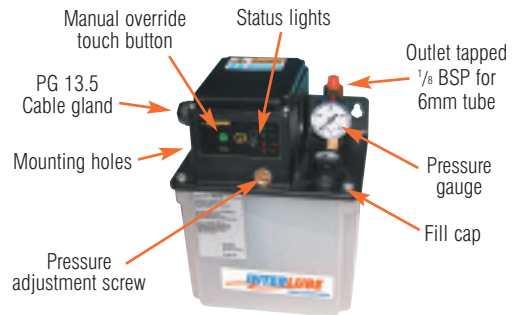
LUBEPLUS GX has been designed to operate with a positive displacement unit (PDU) or with metering flow unit systems. The lubricator is available with a wide combination of condition monitoring features and a choice of 'with' or 'without' microprocessor control.

The microprocessor provides the option of timed or impulse count control and automatically monitors pressure failure and low level condition in the reservoir.

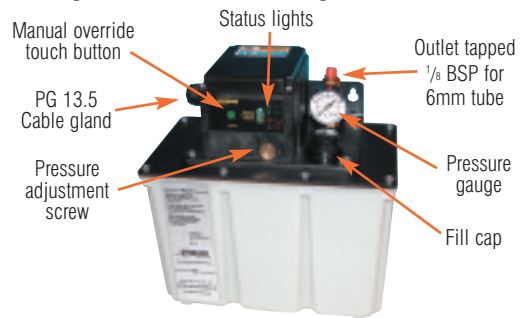
A lubricator without microprocessor enables the user to control the lubrication cycle from the parent machine. A range of condition monitoring features is available as an option.

Lubrication points in a typical LUBEPLUS GX system may be fitted with flow units used with oil or the more precise Interlube Positive Displacement Units (PDU's) which handle fluid greases and oil.

GX (3 litre Reservoir)

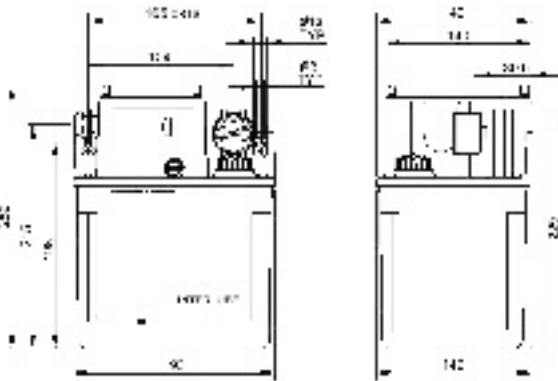


GX (6 litre Reservoir)

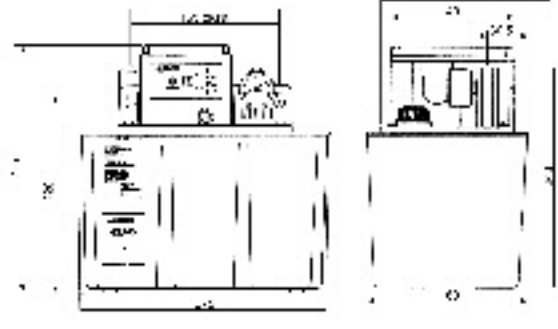


GX DIMENSIONS

3 LITRE RESERVOIR



6 LITRE RESERVOIR



TECHNICAL DATA

ELECTRICAL DETAILS

Voltage/rating:	230/240 VAC or 110/120 VAC at 50/60 Hz
Motor Type:	Open frame shade pole motor
Motor R.P.M.:	2500 at 50 Hz / 3180 at 60 Hz
Electrical Connection:	Terminal block
Electrical Entry:	Pg 13.5
Power Consumption	100W
Current Draw	1A at 220V 2A at 110V

Float Switch

Voltage/rating:	150VAC / 200VDC 0.7ADC
Mode	Normally Closed

Pressure Switch

Voltage/rating:	42V Max, 100V A.
-----------------	------------------

LUBRICATOR DETAILS

Pump Output Volume:	110 cc/min at 50 Hz 130 cc/min at 60 Hz
Ambient Temperature:	40° C
Recommended Lubricants:	15-480 cSt Oil and NLGI000 fluid grease
Operating Pressure:	3 - 25 bar
Oil Temperature:	60° C
Reservoir Capacity:	3 or 6 litre
Weight (full):	5.5 or 9 kg
Protection Class:	IP54

Pressure Switch Settings

Flow Units:	3 bar
PDU's:	12 bar
Pressure Gauge:	0 - 40 bar

LUBEPLUS GX with controls

The standard unit is supplied with an integral controller, which allows selection of either a TIMED MODE of operation or a COMBINATION MODE of time period and impulse count delay period. Selection of modes and settings is achieved via a simple DIL switch.

CONTROL SELECTIONS					
Pump 'ON' Time IN SECONDS (8 OPTIONS)		Pump 'DELAY' Time IN MINUTES (16 OPTIONS)		Impulse 'DELAY' IN PULSES (16 OPTIONS)	
12	36	2	60	20	2600
16	44	4	75	100	3000
20	52	8	90	500	3400
28	60	10	120	750	3800
		12	180	1000	4200
		15	240	1400	4600
		30	360	1800	5400
		45	480	2200	5800

** The motor contains an automatic thermal cut-out, but to ensure the motor does not overheat it is advised that the pump is operated by no more than 12 seconds in every 2 minute period. * Other TIMED/PULSE delay options are available*

STANDARD FEATURES

Pressure monitoring

An internal, factory-set pressure switch monitors the system pressure. This switch is connected to the control board signalling a low pressure warning to the RED LED.

A low pressure warning stops the operation of the lubricator until corrective action has been taken. A pressure gauge is also provided for visual monitoring.

Lubricant level monitoring

A low level switch is mounted within the reservoir. Linked via the microprocessor to the RED LED on the lubricator fascia, it can also be connected externally via the control board, providing to operate an external alarm signal or stop machining cycles. A low level warning will not automatically stop the lubricator.

This may be connected externally to provide a signal to the parent machine.

GREEN LED showing:

Steady on = pump in delay mode
Flashing = pump operating

RED LED showing:

Off: no warning signals
Steady on = pump lubricant low level warning.
Flashing + sounder = pump lubricant low pressure warning

Manual Override/Reset

A touch panel is provided to enable an instant lubrication cycle to be achieved at any time. This will last for the duration of the touch, plus the selected ON period when released. In each control mode pressing the override panel causes the lubricator controller to reset and commence a lubrication cycle.

Pre-lubrication Cycle

LUBEPLUS GX lubricators with control provide an instant pressure cycle on machine start-up or reset (if the supply is routed via the machine on/off system).

LUBEPLUS GX without controls

This model is normally operated in conjunction with the control system of the parent machine. The physical size and mounting arrangement is identical to a GX lubricator with controls. If the pump is to be operated for more than 12 seconds the 'DELAY' period must be not less than 2 minutes. For applications inside this time span please consult Interlube Systems Ltd.

Condition monitoring

The following condition monitoring options are available: Pressure Switch, Pressure Gauge, Float Switch for oil, Float Switch for soft grease, 'Power on' Lamp and a Manual override press button.

GX DIMENSIONS (matrix 1 & 2)

1. WITHOUT CONTROLS

GX X X X X

		GX X X X X				
		FLOAT SWITCH	PRESSURE SWITCH	PRESSURE GAUGE		
1	P.D.U.	1	-	-	3	3 LITRE RESERVOIR
2	FLOW UNIT	2	X	-	6	6 LITRE RESERVOIR
		3	X	X		
		4	X	-	X	
		5	X	X	X	
		6	-	X	-	
		7	-	X	X	
		8	-	-	X	

E.g.: Gx1243 is a GX gear pump using a PDU system at 220VAC with float switch and pressure gauge with a 3 litre reservoir.

2. WITH CONTROLS

GX X X X X

		GX X X X X				
		STANDARD CONTROLS				
3	P.D.U.	1	110/120 VAC 50/60 Hz	3	3 LITRE RESERVOIR	
4	FLOW UNIT	2	220/240 VAC 50/60 Hz	6	6 LITRE RESERVOIR	

OPTIONS

- Fluid grease option available with electronic level sensor
- Cable entry available left (standard) or right hand side of the GX pump
- Pressure relief adjustment available, located in the front face or within the reservoir
- Optional lubricant outlet threads and connections available

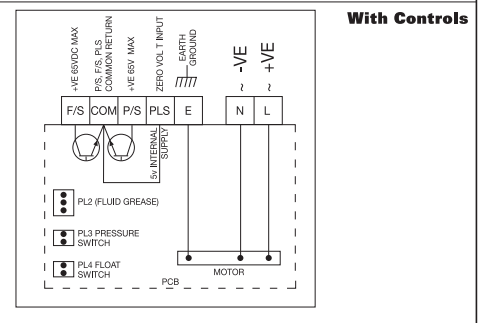
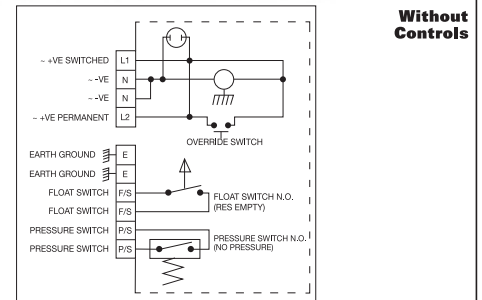
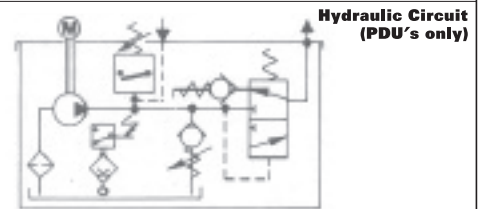
Ordering method

When ordering a LUBEPLUS GX system the required Part No. Is compiled from matrix 1 for pumps without controls and from matrix 2 for those with controls (see below).

Reservoir Sizes

Both 3 litre and 6 litre pumps come complete with a "Plastic" reservoir. A 6 litre sheet metal reservoir is available as an option.

CIRCUIT DIAGRAM



INTERLUBE

A **TIMKEN** Brand

Part of the

Interlube Group

www.interlubesystems.com



UK Headquarters: Interlube Systems Ltd: St Modwen Road, Parkway Industrial Estate, Plymouth, Devon, England, PL6 8LH. Tel: +44 (0)1752 676000 Fax: +44 (0)1752 676001 Email: Info@interlubesystems.com
 USA Division: Interlube Systems Inc: 4696 Wadsworth Road, Dayton, Ohio 45414, USA Tel: (937) 2764507 Fax: (937) 2764518 Email: nmackay@earthlink.net
 Interlube Systems (Malaysia) Sdn. Bhd: 30, Jalan Appollo U5/189, Bandar Pinggiran Subang Sesyen, 40150 Shah Alam, Selangor, Malaysia. Tel: (603) 7845 5377 Fax: (603) 7845 5977 Email: aclube@streamyx.com